

# ORGANISATIONAL CHART

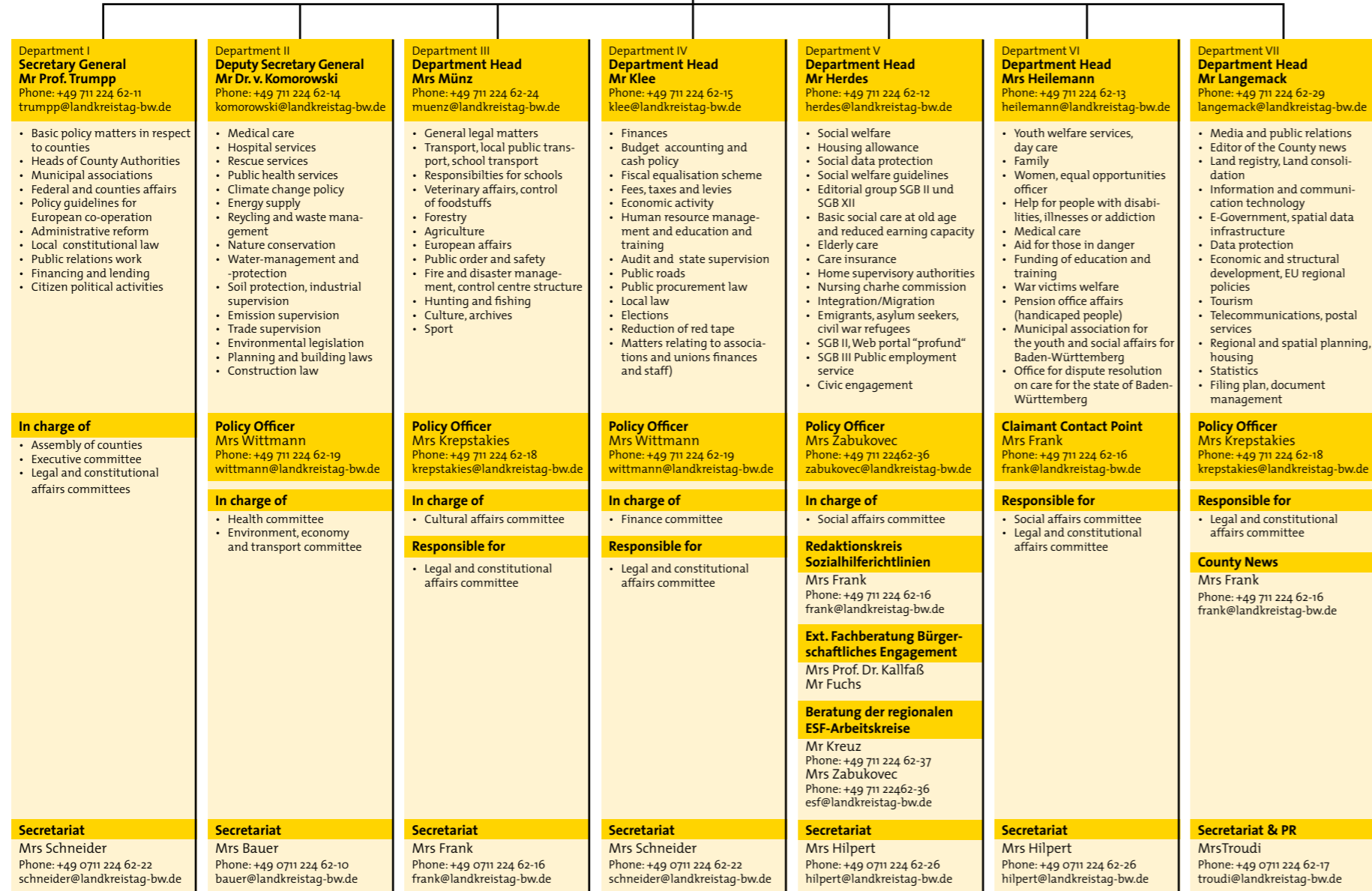
Baden-Württemberg County Association

**Secretary General Prof. Eberhard Trumpp**  
Administration of the office within the framework of policies compiled by the Executive Committee.  
**Secretariat:** Mrs Schneider • Phone: +49 711 224 62-22 • Fax: +49 711 224 62-23 • schneider@landkreistag-bw.de

**Deputy Secretary General Dr. Alexis v. Komorowski**  
**Secretariat:** Mrs Bauer • Phone: +49 711 224 62-10 • Fax: +49 711 224 62-23 • bauer@landkreistag-bw.de

**Dr. Martin Silzer**  
m.silzer@europabuero-bw.de  
**Europabüro der baden-württembergischen Kommunen**  
Rue Guimard 7 • B-1040 Bruxelles

**Secretariat:** Sibylle Walker  
Phone: +32 2 5136408 • Fax: +32 2 5138820  
www.europabuero-bw.de • sekretariat@europabuero-bw.de



As of 9<sup>th</sup> of March 2016

# BADEN WÜRTTEMBERG'S COUNTIES

**Landkreistag Baden-Württemberg**  
70174 Stuttgart · Panoramastraße 37 · Germany  
Phone: +49 0711 2 24 62-0 · Fax: +49 0711 2 24 62-23  
www.landkreistag-bw.de · www.landkreise-bw.de  
e-mail: posteingang@landkreistag-bw.de



County	Inhabitants	km²	Heads of County Authorities
Böblingen	379.674	618	Roland Bernhard
Esslingen	521.588	641	Heinz Eininger
Göppingen	252.106	642	Edgar Wolff
Heidenheim	130.152	627	Thomas Reinhardt
Heilbronn	333.371	1.100	Detlef Piepenburg
Hohenlohekreis	109.904	777	Dr. Matthias Neth
Ludwigsburg	532.604	687	Dr. Rainer Haas
Main-Tauber-Kreis	131.240	1.304	Reinhard Frank
Ostalbkreis	311.902	1.512	Klaus Pavel
Rems-Murr-Kreis	417.861	858	Dr. Richard Sigel
Schwäbisch Hall	190.952	1.484	Gerhard Bauer
<b>Administrative Region Stuttgart</b>	<b>3.311.354</b>	<b>10.250</b>	
Alb-Donau-Kreis	191.343	1.359	Heinz Seiffert
Biberach	193.217	1.410	Dr. Heiko Schmid
Bodenseekreis	212.070	665	Lothar Wöfle
Ravensburg	278.203	1.632	Harald Sievers
Reutlingen	280.815	1.028	Thomas Reumann
Sigmaringen	128.739	1.204	Stefanie Bürkle
Tübingen	219.388	519	Joachim Walter
Zollernalbkreis	189.239	918	Günther-Martin Pauli
<b>Administrative Region Tübingen</b>	<b>1.693.014</b>	<b>8.735</b>	
Calw	154.697	798	Helmut Riegger
Enzkreis	195.403	574	Karl Röckinger
Freudenstadt	115.918	871	Dr. Klaus Michael Rückert
Karlsruhe	435.156	1.085	Dr. Christoph Schnaudigel
Neckar-Odenwald-Kreis	142.530	1.126	Dr. Achim Brötel
Rastatt	226.703	739	Jürgen Bäuerle
Rhein-Neckar-Kreis	538.960	1.062	Stefan Dallinger
<b>Administrative Region Karlsruhe</b>	<b>1.809.367</b>	<b>6.255</b>	
Breisgau-Hochschwarzwald	256.334	1.378	Dorothea Störr-Ritter
Emmendingen	161.324	680	Hanno Hurth
Konstanz	278.442	818	Frank Hämmerle
Lörrach	225.899	807	Marion Dammann
Ortenaukreis	418.809	1.851	Frank Scherer
Rottweil	137.117	769	Dr. Wolf-Rüdiger Michel
Schwarzwald-Baar-Kreis	207.906	1.025	Sven Hinterseh
Tuttlingen	136.110	734	Stefan Bär
Waldshut	167.079	1.131	Dr. Martin Kistler
<b>Administrative Region Freiburg</b>	<b>1.989.020</b>	<b>9.193</b>	
Counties of Baden-Württemberg	8.802.755	34.433	
Land of Baden-Württemberg	10.831.454	35.751	

Source: County Statistical Office • Population figures as of 30<sup>th</sup> of September 2015 - Area as of: 31<sup>st</sup> of December 2014



**MEMBERS**  
**RESPONSIBILITIES**  
**COMMITTEES**  
**OFFICE**

www.landkreistag-bw.de

## MEMBERS, RESPONSIBILITIES, COMMITTEES AND OFFICE

### The County Association of Baden-Württemberg

is the association of the 35 Baden-Württemberg Counties. It was established in Ludwigsburg on 3<sup>rd</sup> of July 1956 and emerged from the union of the Counties of Württemberg and Baden, the Working Group of the Baden Counties and the District Associations Department of the Württemberg-Hohenzollern Municipal Assembly. So the Baden-Württemberg County Association became the second unified Municipal State Association responsible for the entire territory of the Land. At the time it was no easy process until finally the 63 Counties fused to the Municipal State Association of the new Land. With this step, the Counties made a valuable contribution towards the merging into a new state.

### The Counties

promote the wellbeing of their residents, support their municipalities in the fulfilment of their responsibilities and contribute to a just distribution of their burdens.

### The Responsibilities

of the Counties are manifold.

The most important responsibilities are:

- Waste management
- Vocational colleges and special schools
- Health authorities and hospitals
- Social affairs and youth welfare
- School transport
- Public passenger transport
- County roads
- Veterinarian affairs
- Environmental protection

Apart from its municipal responsibilities, the County Authority as a State Lower Administrative Authority has a whole range of citizen-centred responsibilities (vehicle registration, drivers' licences, planning and building laws and many others).

Through the administrative reform in Baden-Württemberg, the County Authorities have received numerous new responsibilities in 2005 in the area of road construction administration, agriculture, forestry, land surveying administration, trade supervision, the control of foodstuffs, land consolidation and water resources management. In addition the Counties voluntarily take on further responsibilities over and above the structured givens. There are some 8,76 million inhabitants living in the 35 Counties. This represents 81,7 % of the state's residents. The Counties consist of an area of 34.433 km<sup>2</sup>, or 96,3 % the total area of the state.

### The County Authority

is headed by the Head of County Authority, who is elected by the County Council for eight years.

### The County Council

is the main body of the County and is elected by the people for a five-year period. In Baden-Württemberg's Counties, there are 2.228 County Council members who are involved on a voluntary basis, of which 799 (35.9 %) belong to the CDU (Christian Democrat Union), 531 (23.8 %) to the Free Voters' Association, 390 (17.5 %) to the SPD (Social Democratic Party), 2282 (12.7 %) Alliance 90/The Green Party, 107 (5.2 %) to the FDP/DVP (Free Democratic Party/German People's Party) and 108 (5.3 %) to other groupings.

### As an association of Baden-Württemberg's Counties, it is the responsibility of the Baden-Württemberg County Association to:

- Uphold the concept of self-government and to advocate the protection of the constitutional rights of its members
- Represent the common interests of the members
- Advise the responsible authorities in the preparation and implementation of legislation, by-laws and decrees, as far as they impact on the interests of the members (Article 71 Paragraph 4 of the State Constitution)
- Foster the exchange of experience among the Counties
- Deal with organisation and cost-effectiveness of the administration
- Promote awareness among the general public for the responsibilities and infrastructure of the Counties
- Advise the members on individual questions

Bodies of the County Association are the Assembly of Counties, the Executive Committee and the President.

### The Assembly of Counties

Is made up of two representatives of the Counties who have the vote, the Head of County Authority and one County Council delegate appointed by the County Council. Among others, the assembly's role is to:

- Lay down policy for association's work
- Vote the President, his/her three Deputies and the members of the Executive Committee
- Determine statute changes

### The Executive Committee

is made up of the President, his three Deputies (Vice Presidents), 12 additional members and the Chief Executive Officer. He is the decision-maker on all issues of fundamental political lobbying relevance and is responsible for all the County Association's duties that are not reserved for the Assembly of Counties or the President, or that rest with the Secretary General.

### The President

Is chairperson of the Assembly of Counties and of the Executive Committee. He represents the Baden-Württemberg County Association vis-à-vis the Legislative Assembly and the State Government on matters of general concern to the association.

### The Expert Committees

of the Administrative District are:

- Legal and constitutional affairs committee
- Finance committee
- Social affairs committee
- Health committee
- Cultural committee
- Environmental protection, economy and transport committee

These Expert Committees decide within their field of expertise.

They prepare position papers on issues of general relevance to the association.

### The Conference of Heads of County Authorities

is composed of the Heads of County Authorities of Baden-Württemberg.

### The Judicial District

rests with exchange of experience on Administrative Region level.

The Judicial District is formed by the Heads of County Authority of every Administrative Region.

### Working Groups

of the Baden-Württemberg County Authorities have been formed to support and promote the administrative practices of certain subjects of expertise.

### The Office

of the Baden-Württemberg County Association is managed by the Secretary General, who is elected by the Executive Committee for an eight-year period.

### The German County Association

The Baden-Württemberg County Association is a member of the German County Association, the Berlin-based central association of the 301 German Counties.

## PRESIDENT

Head of County Auth.	Joachim Walter	Tübingen
----------------------	----------------	----------

## VICE PRESIDENTS

Head of County Auth.	Heinz Eininger	Esslingen
Head of County Auth.	Frank Hämmerle	Konstanz
Head of County Auth.	Karl Röckinger	Enzkreis, Pforzheim

## EXECUTIVE COMMITTEE

Head of County Auth.	Gerhard Bauer	Schwäbisch Hall
Head of County Auth.	Detlef Piepenburg	Heilbronn
Head of County Auth.	Dr. Rainer Haas	Ludwigsburg
Head of County Auth.	Klaus Pavel	Ostalbkreis, Aalen

Head of County Auth.	Dr. Achim Brötel	Neckar-Odenwald-Kreis
Head of County Auth.	Dr. Christoph Schnaudigel	Karlsruhe
Head of County Auth.	Dorothea Störr-Ritter	Breisgau-Hochschwarzwald, Freiburg
Head of County Auth.	Hanno Hurth	Emmendingen
Head of County Auth.	Dr. Wolf-Rüdiger Michel	Rottweil
Head of County Auth.	Heinz Seiffert	Alb-Donau-Kreis, Ulm
Head of County Auth.	Thomas Reumann	Reutlingen
Head of County Auth.	Lothar Wöfle	Bodenseekreis, Friedrichsh.

## SECRETARY GENERAL

Prof. Eberhard Trumpp

## EXPERT COMMITTEES CHAIRPERSONS

Legal and constitutional affairs committee	Head of County Auth.	Frank Hämmerle, Konstanz
Finance committee	Head of County Auth.	Klaus Pavel, Ostalbkreis
Social affairs committee	Head of County Auth.	Dr Achim Brötel, Neckar-Odenwald-Kreis
Health committee	Head of County Auth.	Detlef Piepenburg, Heilbronn
Cultural committee	Head of County Auth.	Heinz Eininger, Esslingen
Environmental protection, economy and transport committee	Head of County Auth.	Dr. Rainer Haas, Ludwigsburg

## THE JUDICIAL DISTRICT

Administrative Region Stuttgart	Head of County Auth.	Klaus Pavel, Ostalbkreis, Aalen
Administrative Region Karlsruhe	Head of County Auth.	Karl Röckinger, Enzkreis
Administrative Region Freiburg	Head of County Auth.	Frank Hämmerle, Konstanz
Administrative Region Tübingen	Head of County Auth.	Lothar Wöfle, Bodenseekreis, Friedrichshafen